

The Prime Choice For Prime Labeling



# LABEL-AIRE®

## Labeling Solutions That Apply

### Model 2111 Air Blow Applicator



The 2011 Air Blow labeling head dispenses the label onto a vacuum grid assembly. At the precise moment the product passes the applicator, the maximum 4" x 5.5" label is gently blown onto the product at production line speeds.

### Model 2100 Series

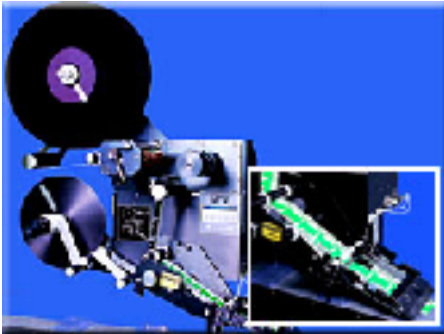
The Label-Aire model 2100 series of applicators are high speed stepper driven labeling machines designed for very accurate label placement ( $\pm 1/32"$ ) at web speeds of up to 1,600 inches and 1,000 products per minute.

### Model 2114 Tamp-Blow Applicator

The 2114 also holds the label on by vacuum at the end of an air cylinder tamp pad. As the product travels down the conveyor, the air cylinder extends toward the product and blows the label onto the product from approx. 1/16" away..



### Model 2115 Wipe-On Applicator



The 2115 applies labels via a speed matching dispense of label onto the product at up to 1,600 IPM (133 FPM). Products may be labeled in any attitude (top, side, or bottom).

#### Options

- Right or Left Hand Unit
- Low Label Indicator
- Out of Label Indicator
- Web Break Indicator
- Velocity Compensation
- Imprinters
- Portable T-Base Stand
- 20" Diameter Unwind

#### Specifications

- Electrical: 115VAC, 60 cycle, 5A
- Air: 4 CFM @ 80psi (2114 only)
- Electronics: Microprocessor
- Label Roll Size: 12" OD, 3" Core
- Label Sensing: Optical Sensing
- Label Size: 4" width (6" optional)
- Size: 2'W x 2'H x 2'D, 110 lbs.

demand  
the best

best label

# BEST

Label Company, Inc.  
[www.bestlabel.com](http://www.bestlabel.com)

2943 Whipple Rd. Union City, CA 94587 • 13260 Moore St. Cerritos, CA 90701  
Ph: 510.489.5400 Fax: 510.489.2914 • Ph: 562.926.1432 Fax: 562.404.2076