

The Prime Choice For Prime Labeling



LABEL-AIRE®

Labeling Solutions That Apply

Model 2011 Air Blow Applicator



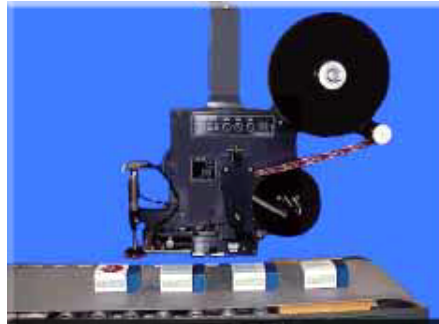
The 2011 Air Blow labeling head dispenses the label onto a vacuum grid assembly. At the precise moment the product passes the applicator, the maximum 4" x 5" label is gently blown onto the product at production line speeds.

Model 2000 Series

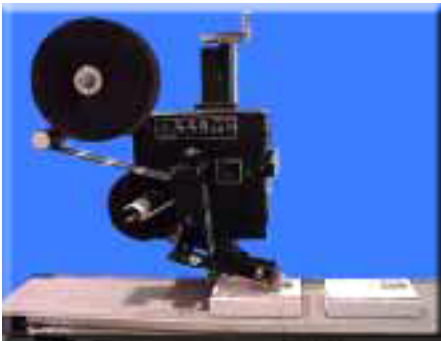
The Label-Aire model 2000 series of applicators are low-cost yet rugged units designed to address applications that require precise label placement accuracy ($\pm 1/32"$) at low to medium production speeds.

Model 2014 Tamp-Blow Applicator

The 2014 also holds the label on by vacuum at the end of an air cylinder tamp pad. As the product travels down the conveyor, the air cylinder extends toward the product and blows up to a 3" x 3" label onto the product.



Model 2015 Wipe-On Applicator



The 2015 applies labels via a speed matching dispense of label onto the product at up to 750 IPM (63 FPM). Products may be labeled in any attitude (top, side, or bottom).

demand
the best

best label

Options

- Right or Left Hand Unit
- Low Label Indicator
- Out of Label Indicator
- Web Break Indicator
- Velocity Compensation
- Imprinters
- Portable T-Base Stand

Specifications

- Electrical: 115VAC, 60 cycle, 5A
- Air: 2 CFM @ 60psi (2014 only)
- Electronics: Microprocessor
- Label Roll Size: 12" OD, 3" Core
- Label Sensing: Optical Sensing
- Label Size: 4" width (6" optional)
- Size: 2.5'W x 2'H x 1.2'D, 70 lbs.

BEST

Label Company, Inc.
www.bestlabel.com

2943 Whipple Rd. Union City, CA 94587 • 13260 Moore St. Cerritos, CA 90701
Ph: 510.489.5400 Fax: 510.489.2914 • Ph: 562.926.1432 Fax: 562.404.2076